



# **SNDT**

## **Women's University**

**APRIL**  
**2023**



### **Department of**

## **Resource Management**

Juhu Road, Santacruz (W),  
Mumbai 400 049

Tel.: +91-22-26608462  
Email: [frm@sndt.ac.in](mailto:frm@sndt.ac.in)

**[sndt.ac.in](http://sndt.ac.in)**

## **About the S.N.D.T. Women's University**

Shreemati Damodar Nathibai Thackersey (S.N.D.T.) Women's University was started by Maharshi Karve in 1916. The University is the first Women's University in India and in South Asia.

Today the University offers various programmes at its three campuses, through 39 University Departments and more than 174 affiliated colleges. The main campus and the administrative offices are located at New Marine Lines, Mumbai and the branch campuses are located at Sir Vithaldas Vidyavihar, Juhu, Santacruz(W), Mumbai and Karve Vidyavihar at Pune.

The motto of the University is:

**"An Enlightened Women is a Source of Infinite Strength".**

### **Mission**

SNDT Women's University is committed to the cause of women's empowerment through access to education particularly higher education, through relevant courses in the formal and non-formal streams. Further, SNDT Women's University is committed to provide a wide range of professional and vocational courses for women to meet the changing socio-economic needs, with human values and purposeful social responsibility and to achieve excellence with "Quality in Every Activity".

# **DEPARTMENT OF RESOURCE MANAGEMENT**

The Department of Resource Management (formerly named as Family Resource Management) is a field that concentrates on management of resources – human and non-human. The postgraduate program was established in 1982, and its academic programs, research and extension activities are relevant to in the context of fast changing human ecology and environment.

## **Our Mission**

The Department of Resource Management aims to equip its students with knowledge and skills for emerging as professionals in the fields of Interior Design, Consumer Studies, Ergonomics, Environment and Fitness.

## **Our Goals**

- To provide quality education that will help to students to be successful professionals in the area of Ergonomics, Interior design, Consumer Services, Hospitality Management, Entrepreneurship, Environment and Development.
- To offer services in Ergonomics, Consumer Ergonomics, Interior Designing, Environment and Entrepreneurship to other academic institutions, industry, public sector and voluntary organizations.
- To publish research papers, manuals, monographs, books, and to work for documentation and development of databases for relevant topics.

## Faculty Information

The Department of Resource Management (formerly named as Family Resource Management) has two permanent faculty members and visiting faculties on clock hour basis. Dr. Archana Bhatnagar, Headed the department till June 30, 2022 till superannuation. Dr. Manjit Kaur Chauhan was appointed as Head of the department (Additional Charge), post retirement of Prof. Archana Bhatnagar from July 1, 2022.



Dr. Manjit Kaur Chauhan  
Present HOD  
Juhuu Campus Coordinator







Prof. Archana Bhatnagar  
Former HOD  
Retired on June 30, 2022



## Visiting Faculty Information

The list of visiting faculty from 2015-2022 is given below:

Visiting Faculty	
	Ar. Urmila Rajyadhyaksha Subject Expert: Landscape Designer
	Ar. Mustafa Bengali Subject Expert: Architecture, Interior Design
	Dr. Prachi Patel Areas of Specialization: Ergonomics, Interior Designing, Research and Human Resource Management
	Dr. Meenaxi Kamat Subject Expert: Entrepreneurship Management



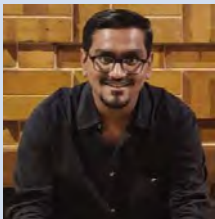

## Visiting Faculty Information

The list of visiting faculty from 2015-2022 is given below:

	Visiting Faculty
	Dr. Hemani Malhotra Subject Expert: Consumer Behaviour, Ergonomics
	Ms. Pallavi Murarka Subject Expert: Ergonomics, Consumer studies
	Ms. Harshita Srivastava Subject Expert: Environment
	Mr. Narendra Khare Subject Expert: Statistics

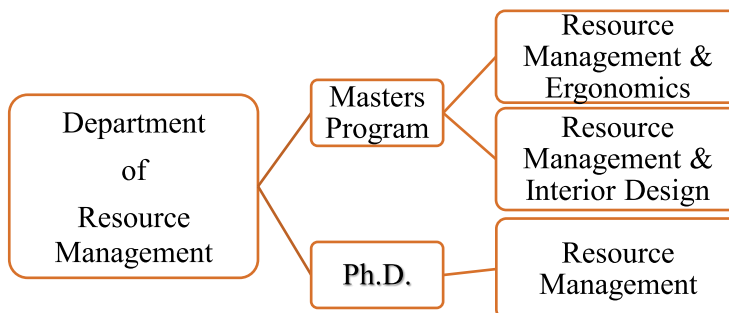
## Visiting Faculty Information

The list of visiting faculty from 2015-2022 is given below:

	Visiting Faculty
	Ar. Neha Shah Subject Expert: Auto-CAD and Landscaping
	Ms. Devika Vaidya Subject Expert: Human Resource Management
	Ar. Vaibhav Patel Subject Expert: Landscape Designer, Auto-CAD, Photoshop
	Dr. Ashok Bhise Subject Expert: Consumer Ergonomics

## Programs Offered

The Department of Resource Management offers two masters program and PhD program.



## VALUE-AIDED COURSES

<b><u>RESOURCE MANAGEMENT &amp; ERGONOMICS</u></b>	<b><u>RESOURCE MANAGEMENT &amp; INTERIOR DESIGN</u></b>
<ul style="list-style-type: none"> <li>• Soft Skill Development &amp; Personality Development – 4 Credits</li> <li>• Travel Ergonomics – 2 Credits</li> <li>• Ergonomics in Hospitality Industry – 4 Credits</li> <li>• Time &amp; Energy Management – 2 Credits</li> <li>• Management of Resources – 4 Credits</li> <li>• Gender Discrimination at Work place – 2 Credits</li> <li>• Professional &amp; Communication Skills – 4 Credits</li> <li>• Methods of Waste Management – 4 Credit</li> </ul>	<ul style="list-style-type: none"> <li>• Accessories in Design Projects – 2 Credits</li> <li>• Application of Ergonomics in Interior Designing</li> <li>• Interior Designing software Application – 4 Credits</li> <li>• Furniture Design – 4 Credits</li> <li>• Site Management – 2 Credits</li> <li>• Management of Interior Waste Materials – 4 Credits</li> <li>• Management of Resources – 4 Credits</li> <li>• Lighting in Interiors – 4 Credit</li> <li>• Rendering &amp; Presentation Skills- 2 Credits</li> </ul>

## Department Programs

### RM & Ergonomics – Revised 2020-21

<b>Core Courses</b>	<b>Core Courses</b>
<b>Semester - I</b>	<b>Semester - II</b>
Human Physiology (Th)	Research Methodology (Th)
Ergonomics & Work Posture Studies (Th)	Environmental Ergonomics (Th)
Ergonomics & Work Posture Studies (Pr)	Environmental Ergonomics (Pr)
Human Resource Management (Th)	Financial Management (Th)
Environmental Studies & Sustainability (Th)	Consumer Behaviour & Consumerism (Th)
Elective-I- Ergonomics in Everyday Life: Case study Based (Th+Pr)	Elective-II - Financial Management
<b>Semester - III</b>	<b>Semester - IV</b>
Research & Statistical Applications (Th)	Dissertation (Pr)
Job Analysis & Optimization (Th)	Internship (Th)
Occupational Health & Safety (Th)	Consumer Ergonomics (Th)
Industrial Application of Ergonomics (Pr)	Elective –IV (Swayam Course/ Any Online Course)
Organizational Behaviour (Th)	
Elective III – Entrepreneurship Management (Th)	

**Revised in 2020 and implemented in 2021**

## Department Programs

### RM & Interior Design – Revised 2020-21

Core Courses	Core Courses
Semester - I	Semester - II
Residential Interiors Space Design (Th)	Research Methodology (Th)
Residential Interiors Space Design (Pr)	Commercial Interior Space Design (Th)
Computer Application in Interior Design (Pr)	Commercial Interior Space Design (Pr)
Human Resource Management (Th)	Construction & Materials (Pr)
Environmental Studies & Sustainability (Th)	Latest Trends & Technologies in Interior Design (Pr)
Elective-I- Ergonomics in Everyday Life: Case study Based (Th+Pr)	Elective-II (Product Design & Development)
Semester - III	Semester - IV
Research & Statistical Application	Dissertation
Landscape Design	Internship
Working Drawing (Pr)	Professional Practices (Theory)
Services & Specialised Services (Pr)	<b>Elective-Designing e-Portfolio/ Swayam Course/ Any Online Course</b>
Organizational Behaviour (Th)	
Elective III – Green Interiors	

**Revised in 2020 and implemented in 2021**

## **Department Information**

The department offers two programs: (1) Resource Management and Ergonomics and (2) Resource Management and Interior Design. The programs offered by the Department are relevant to contemporary emerging lifestyles and managing available resources for improving quality of life.

The Department encourages independent study and projects related to current developments in the field. It encourages students to develop presentation and communication skills through seminars, participation in conferences and workshops, Internship programme and regular interaction with professionals from the field as a part of the programme. Student Enrichment programs are conducted to enhance students' knowledge and skills. The Internship programme provides an opportunity for an interface with the industry and professionals to prepare them for professional demands/challenges in the field.

### **Employment Opportunities**

Students can take up careers as scientists, researchers, academicians, interior designers, consultants and managers in industries, material specialists, ergonomics consultants in product design and development, entrepreneurs, private and public enterprises, hotels, hospitals etc.

The Department undertakes outreach programmes, consultancy, seminars, workshops and training activities in its focal areas.

## **Programs Offered and their Duration**

- ❖ Ph.D. in Resource Management (3 years)
- ❖ M.Sc. Resource Management and Ergonomics (2 years)
- ❖ M.Sc. Resource Management and Interior Design (2 years)

## **ELIGIBILITY CRITERIA FOR M.Sc IN RESOURCE MANAGEMENT PROGRAM**

### **MSc in Resource Management and Ergonomics**

Students who have obtained any one of the following degrees from any recognized University and have obtained the degree as specified below are eligible to apply :

A. Minimum 45% percent or B grade for students with BSc Resource Management, BSc Home Management, BSc Family Resource Management, BSc Home Economics, BSc General Home Science, BSc Composite Home Science, BSc Family and Community Sciences.

B. Minimum 50% or B grade for students with BSc Physiology, BSc Life Sciences, BSc Biology.

### **MSc in Resource Management and Interior Design**

Students who have obtained any one of the following degrees from any recognized University and have obtained the minimum 50% percent or B grade as specified below are eligible to apply :

BSc Resource Management, B.Design, BSc Home Management, BSc Family Resource Management, BSc Home Economics, BSc General Home Science, BSc Composite Home Science, BSc Family and Community Sciences.

NOTE: Those who have done BSc Home Economics, BSc General Home Science, BSc Composite Home Science, BSc Family and Community Sciences should have passed Elementary and Intermediate Drawing examinations.



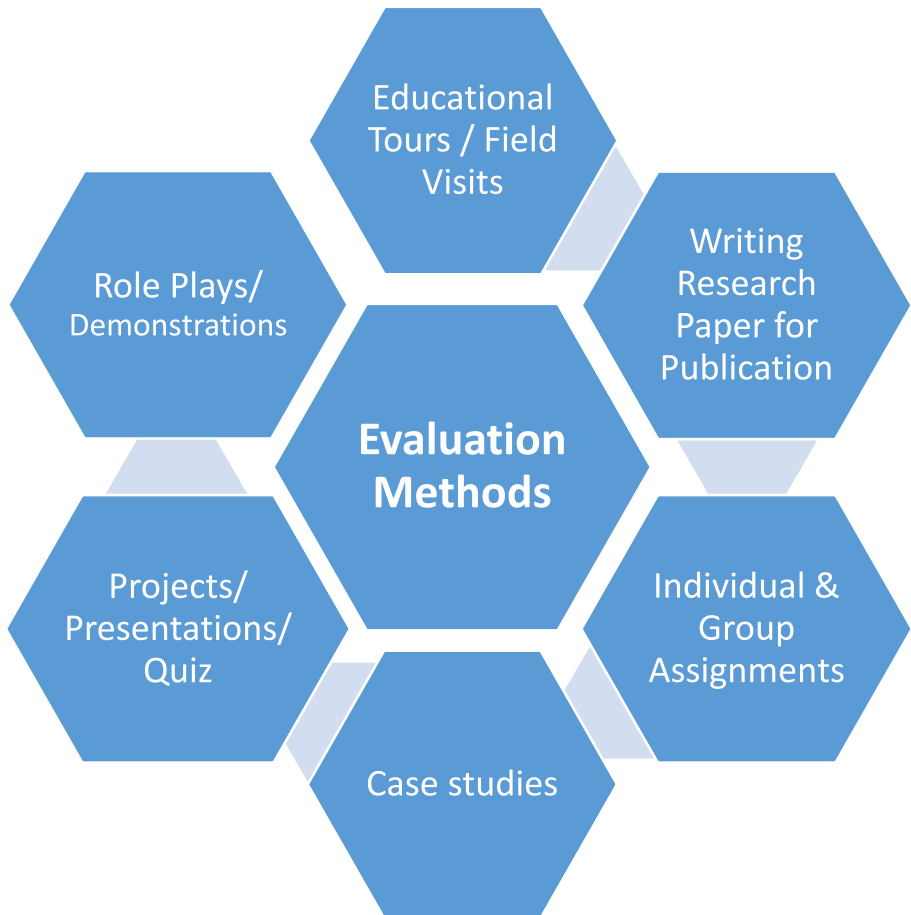
The initiatives launched by Department of Resource Management are:

1. To inculcate research culture in learners.
2. To develop infrastructure facilities for academic and research activities and to progress towards excellence in the identified thrust areas.
3. To explore collaborative ventures with industry for student's internship and professional placement.
4. To undertake collaborative and interdisciplinary research in the identified thrust areas
5. To develop a national data base for various women's activities vis-à-vis different occupations
6. To serve as a resource centre for training and consultancy in the areas of Ergonomics, Consumer Ergonomics and sociological/developmental issues related to Environment.
7. To disseminate information /knowledge through seminars, workshops and publications.

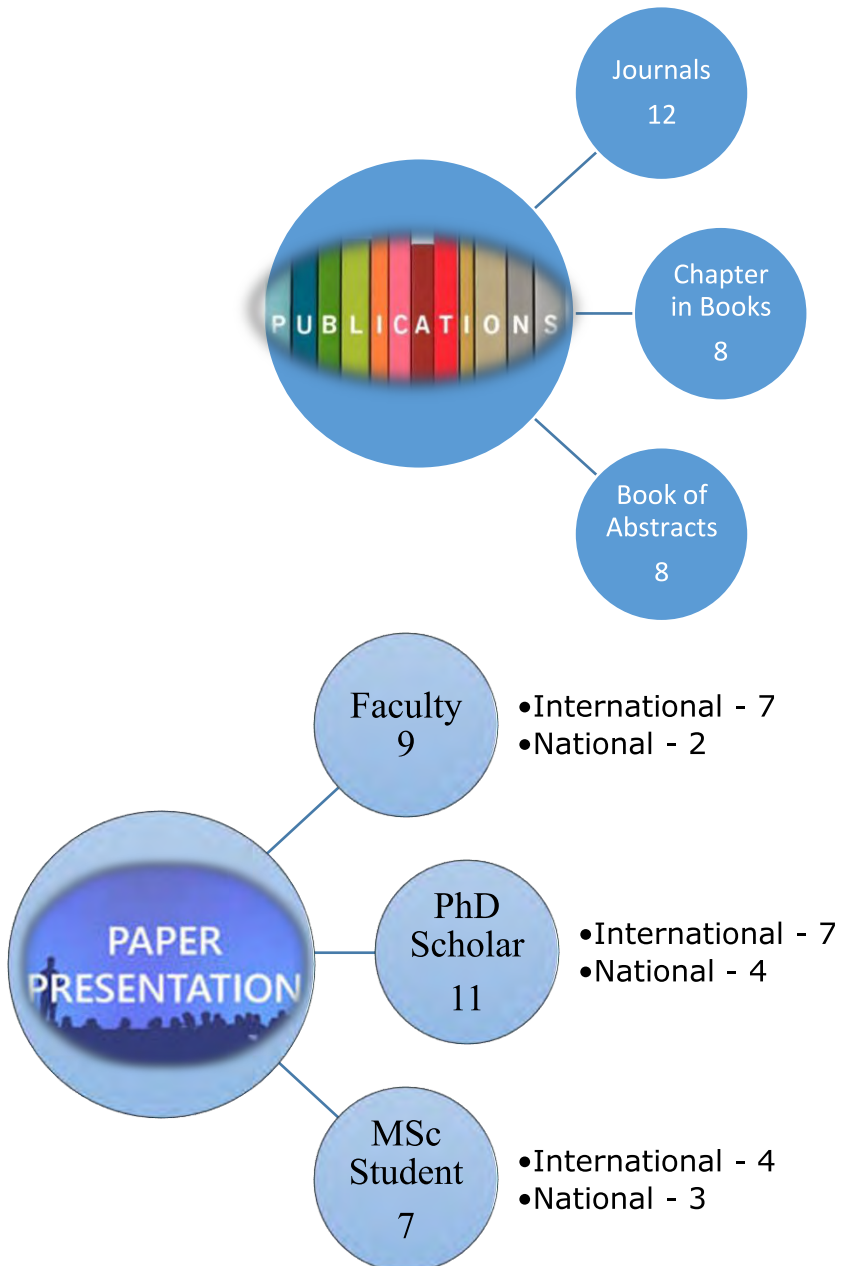
The initiatives launched by Department of Resource Management are:

1. To inculcate research culture in learners.
2. To develop infrastructure facilities for academic and research activities and to progress towards excellence in the identified thrust areas.
3. To explore collaborative ventures with industry for student's internship and professional placement.
4. To undertake collaborative and interdisciplinary research in the identified thrust areas
5. To develop a national data base for various women's activities vis-à-vis different occupations
6. To serve as a resource centre for training and consultancy in the areas of Ergonomics, Consumer Ergonomics and sociological/developmental issues related to Environment.
7. To disseminate information /knowledge through seminars, workshops and publications.

## Teaching and Evaluation Methods



# Research Publications and Presentations



## Thrust areas of Research

The main thrust areas of Research are Ergonomics, Environment, Consumer Ergonomics, Interior Design and Management. The Department encourages the staff and students to participate in Conference, Publish papers in reputed Journal, besides encouraging students to participate in co-curricular activities for the over all growth and development of the students. Various expert sessions on ethics in research, information on finding right literature, data analysis through excel and techniques for writing bibliography are arranged for the students.

- Occupational Health
- Product Design
- Workplace Design
- Physical Fitness

Ergonomics



- Residential & Commercial places
- Set Design
- Inclusive Design
- Parks & Garden

Interior Design



- Consumer Behaviour
- Organization Behaviour
- Environment studies
- Human Resource Management

Other Areas



## **Faculty involvement in Academic & Non-Academic Committees**



- RUSA



- Membership in Academic and Non-Academic Bodies



- Member of Scientific Committee



- Member of Sexual Harassment Committee



- Member of Policy Making Committee



- Executive Member of NGO



- Advisor to Rotaract Club SNTWU Juhu Campus

# Student Support & Progression

## Support to Students

- ❖ Mentorship
- ❖ Orientation / Induction
- ❖ Anti-Ragging Committee
- ❖ Grievance Committee
- ❖ Students Welfare Schemes
- ❖ Financial Support system - Scholarships
- ❖ Medical Check-up
- ❖ Support for Participations in academic/Non Academic activities

## Progression to higher education

One student enrolled for PhD Program – Mikita Laad (5 enrolled in 2021-22)

Two students went to foreign university – Khushali Gandhi & Saniya Rodrigues



## Number of students qualified in State/National/ International level Examinations

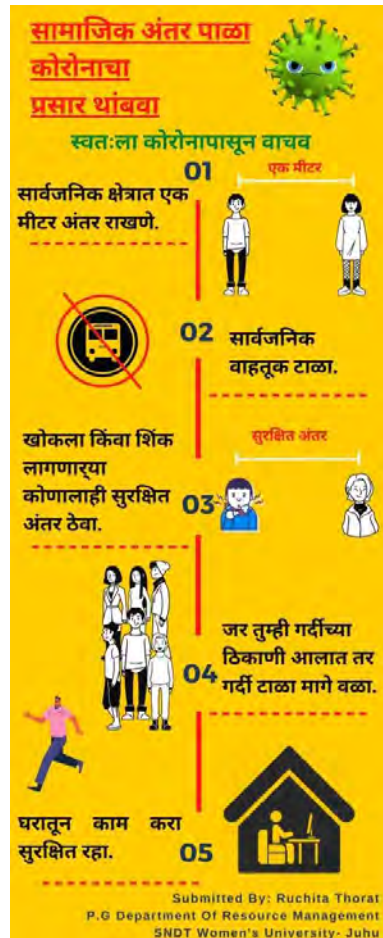
NET Qualified – 3

SET Qualified - 2

## Activities undertaken during COVID-19

- Research Projects Undertaken
- Coursera Courses undertaken by students & Faculty
- Organized & Attended Webinars
- Participated in various events / Competitions
- Students created video's for Covid warriors
- Participated in ICT Tools Training Programme
- Under EBSB students created infographics for Covid-19 in regional languages

Inspired Stories





## **Best Practices and Unique Features of the Department**

<b>List of Best Practices</b>
➤ Ergonomics Training Programme
➤ Participation of Students in National & International Conferences and presenting papers
➤ Interior Design students participation in TARASH Design Competition
➤ Organizing Seminar/ Workshop/Conference/ talks
➤ Skill development Workshops for Interior Designing students
➤ Field visits to Industries, Nurseries, Nature Park, Education tour
➤ Celebration of Special days (Women's Day, Dr. B.R. Ambedkar Day, Founder's Day, National Science Day)
➤ Library Orientation & knowledge on Search engines & referencing
➤ Beach Cleaning Activity, Environment Related Events & other social events
➤ Students' participation in Yuva Mahotsav
➤ Ek Bharat Shreshth Bharat
➤ E-Waste Management
➤ Regular Ph.D meetings and Exchange of Knowledge

## Training Workshops



Ergonomics Training Program



Assessment of Industrial Environment



Workshop on Model Making



Excel Training Program

# Different Teaching Learning Methods



Collaborative Learning



Experiential Learning



Ergonomic Assessment



Design Based Thinking

# Faculty Development Programme



One Week Training in E-Assessment Tools (June 19-25, 2017)



SwaDisha – UNDP Training Programme



ICMR Training at NIOH Ahmedabad



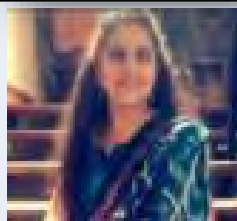
## Alumni Corner

### Notable Alumni



**Dr. Arpita Sharma**

Principal Scientist in Social Science Division of ICAR-Central Institute of Fisheries Education, Mumbai, India.



**Mikita Lad (Gupta)**  
**(2014-2015)**

Sr. Interior Designer Pvt. Ltd., Bengaluru  
Currently a Design partner at Livspace & pursuing P.D. in Art & Design at Srishti Institute of Art Design and Technology



**Dr. Neeti Atreya**

Self-Employed  
Holistic Health Practitioner at Nature's Own Healing  
Toronto, Canada Area



**Arundhati Dolas**

Project Scientific Assistant at  
Homi Bhabha Centre for Science Education, TIFR



**Geetika Bhatnagar**

Currently working as intern HR with Tech Mahindra  
Previously worked at ANA Designs as an Interior Designer

## Alumni Corner

### Notable Alumni



**Ms. Noorisha Sarma**

**(2018-20)**

Deputy Manager Ergonomics (Product Development),  
Stiger EV, Pune.



**Ms. Tejashree Ambrale**

**(2016-18)**

Current: Senior Executive – L & D at Hexaware  
Technologies, Mumbai.  
Worked at QuezX.com, Senior HR-Operation  
Associate



**Ms. Christina D'Souza**

**(2015-17)**

Current: HR Generalist at S.L. Raheja Hospital – A  
Fortis Associate, Mumbai.  
HR-Training & Development, Kokilaben Dhirubhai  
Ambani Hospital, Andheri.



**Ms. Devika Vaidya**

**(2013-15)**

Lead Analyst – Learning & Development at Travelex,  
Mumbai.



**Ms. Pranjali Ratnaparkhi**

**(2013-15)**

Territory Assistant Manager – Design with Livspace,  
Nashik, India

## **Students Participation in conferences and Awards Won**



**International Conference –  
HWWE 2017**



**National Seminar – 1<sup>st</sup> Prize  
–Poster & Presentation**



**Best Paper Award at International  
Conference – PLEA 2018**



**Young Researcher Award**



**Poster Presentation on  
National Science Day**



**Paper Presentation at  
International Conference –  
HWWE 2017**

## Faculty Participation and Felicitation



**Chairing the Session at International Conference HWWE 2017**



**Chairing paper presentation Session National Conference**



**Paper Presentation in International Conference – HWWE 2019**



**Invited Speaker for HSAI, 2018**



**Resource Person at National Training Program on Aug. 18, 2020**



**Felicitated by NGO Femsakhi**



## **Ph.D. Awardees**



**Ms. Anuradha KP in Jan. 2017**



**Ms. Roma Gandhi & Ar. Roshni  
Udyavar in Jan. 2019**



**Ms. Hemani Malhotra in Feb. 2023**

## Conferences, Seminars, Workshops & Training Programmes



## Participation in Social & Sports Events





## Environmental Awareness & Issues related Events



## Health Awareness Programmes





## Participation in National & other Important Days



## Disaster Management - Mock Drill organized by Airport Authorities of India

**September 15, 2019**

Day-I: Fire Safety Training

Day-II: Training session on Aircraft Crash  
Disaster

Day-III: Mock Drill Exercise





## Participation of students in University Activities





## Extension and Community Outreach Programmes



Visit to Old Age Home



Financial Literacy Programme for Household Maids



Financial Literacy Programme



Health & Fitness of Rural Women



Mega Medical Camp for 2000 school children

## Industrial & Field Visits



## Flagship Programmes of the Department

### 1. Methodologies in Ergonomics Assessment

**Title of the Program:** Series of program on Instrumentation and Methods in Ergonomic Assessment

**Workshop Insight:** Training programme includes demonstration and knowledge of various methodologies and equipment used in Ergonomics assessment. The main purpose of the training programme is to impart correct procedures and methods in ergonomic assessment across all the home science colleges teaching Ergonomics.





## Flagship Programmes of the Department

### 2. Physical Fitness Assessment at Tejaswini

Tejaswini is the contest to select best all round student from the university organised by Department of Students Welfare. There are many rounds for students to clear. Our department since 2010 is conducting Physical Fitness Tests for all contestants. The Ergonomics students are trained to carry out this activity



## **Internship Programme** **and** **Placement through Internship**

Internship is mandatory for all students joining the masters program. The main purpose of the internship is to provide student with an environment that facilitates in enhancing skills and competencies, for increasing knowledge and enabling students to identify strengths and upgrade those skills that will help in reaching career goals. The internship will also help students to become committed towards their job and develop healthy professional code of ethics at workplace.

The internship is an 8 – credits course. The student needs to complete 240 hours in the organization during the internship period. The number of work hours per week can be approximately 40 hours and the number of working days will be 30 days. The student needs to develop work plan, work on the assignments and projects given by the supervisor / mentor and make weekly report and submit to the mentor and faculty coordinator. Finally the report will be prepared, assessed and certified by the supervisor and then by faculty coordinator.



## Teaching staff, Non-teaching staff & students of Department of Resource Management







## एस्. एन्. डी. टी. महिला विद्यापीठ

### \* कुलगीत \*

“संस्कृता स्त्री पराशक्ति” स्वर हमारा है  
विश्व है परिवार, भारत घर हमारा है।  
हम नहीं हैं दीन, कहता कौन हम अबला  
है सबल संस्कृति हमारी, हम सभी सबला  
ज्योती से जगमग हुआ, अंतर हमारा है॥  
स्वप्न ठाकरसी हुआ साकार है इसमें  
महर्षि कर्वे तपस्या - सार है इसमें  
हम दिशाएँ और यह दिनकर हमारा है॥  
“संस्कृता स्त्री पराशक्ति” स्वर हमारा है  
विश्व है परिवार, भारत घर हमारा है।



## Booklet Committee

- Prof. Medha Tapiawala, Dean, Faculty of Humanities
- Mr. Mehul Khale, PRO
- Mr. Shrikant Salekar, Jr. Stenographer

Published by  
Shreemati Nathibai Damodar Thackersey Women's  
University, Mumbai